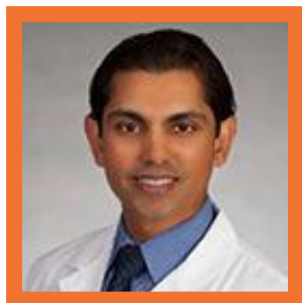




Team Science

SEMINAR SERIES

in Clinical & Translational Research



Emmanuel Thomas, M.D., Ph.D.

Assistant Professor,
Miller School of Medicine

WHEN

Tuesday, October 3
4 – 5 p.m.

WHERE

Don Soffer Clinical
Research Center
Room 705

An Integrated, Multidisciplinary Approach for Translational Research in Liver Disease

There are many approaches to developing a translational research program. Dr. Thomas and his team have taken an organ-specific approach with a focus on efforts to advance clinical care for liver disease.

ABOUT

Dr. Emmanuel Thomas grew up in Miami-Dade. In 2007, he graduated from the University of Miami Miller School of Medicine simultaneously completing both M.D. and Ph.D. degrees. He also completed a Doris Duke Clinical Fellowship at UNC Chapel Hill School of Medicine and a fellowship in the Liver Diseases Branch at the National Institutes of Health. Dr. Thomas' area of expertise is in viral hepatitis and on the mechanisms by which Hepatitis B and C cause liver disease and hepatocellular carcinoma. His research also addresses the rapid development of liver disease and Hepatocellular Carcinoma, which occurs in patients coinfecting with HIV and HCV - viruses that significantly impact the South Florida community.